

ELECTRICAL PROPERTIES (@ 77°F / 25°C)			
OPERATING VOLTAGE WINDOW	8-29 VOLTS	INTERNAL RESISTANCE	0.0019 OHMS
ULTIMATE MAXIMUM VOLTAGE	30 VOLTS	CAPACITANCE	315 F
ULTIMATE MINIMUM VOLTAGE	0 VOLTS	MAXIMUM POWER	112 kW
CURRENT LEAKAGE @ 30V	4.5mA	CYCLE LIFE	1,000,000 CYCLES
ENERGY STORED WITHIN OPERATING VOLTAGE WINDOW	122.4 KILOJOULES	ENERGY STORED AT MAXIMUM VOLTAGE	141.8 KILOJOULES

Weight:  
Approx 32.5lb

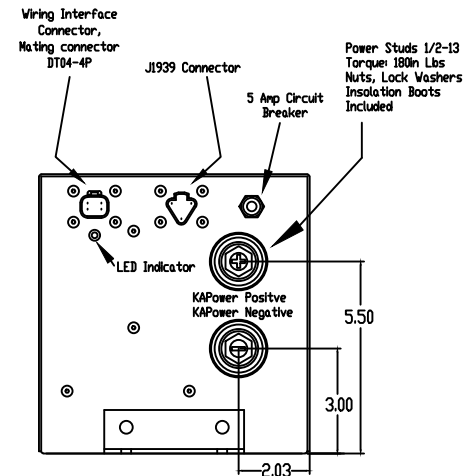
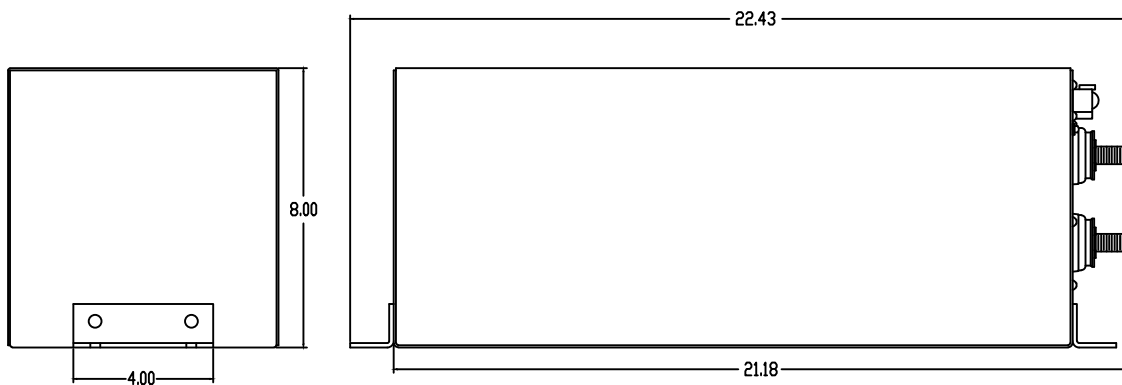
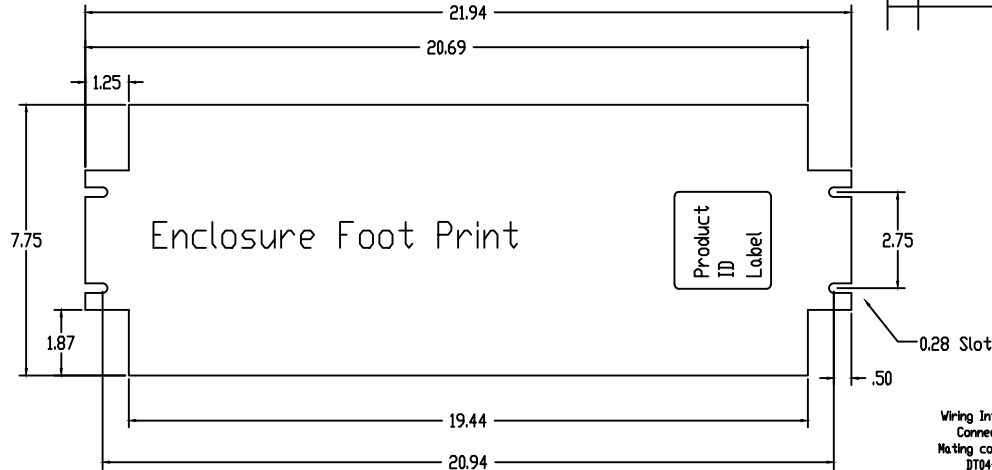
Material:  
Shell; 16ga SS 304 2B  
Cover; 18ga SS 304 2B

PART NAME: KAPOWER SYSTEM, KSM, 10 CELL		PART NUMBER: KSM102400	
SIZE: <i>D</i>	DRAWN BY: <i>M.F. Burke</i>	APPROVED BY: <i>D.R. Tolberg</i>	CUSTOMER NUMBER:
DATE: 8/15/16	DATE: 8/15/16		
SCALE: <i>None</i>	UNLESS OTHERWISE SPECIFIED DIMENSION TOLERANCES ARE: X ±0.015, XX ±0.010, XXX ±0.005, ANGLES ±0.5°. FINISH PER MIL STD-10. DO NOT SCALE DRAWING.		
REV.	DESCRIPTION	DATE	BY

THIS DOCUMENT IS THE PROPERTY OF KBI. IT IS LOANED SUBJECT TO THE CONDITION THAT IT OR ANY INFORMATION CONTAINED HEREIN WILL NOT BE REVEALED TO ANY UNAUTHORIZED PERSON OR REPRODUCED OR USED FOR MANUFACTURING PURPOSES WITHOUT THE EXPRESS WRITTEN PERMISSION OF KBI AND THAT ALL COPIES WILL BE RETURNED IMMEDIATELY ON DEMAND.

© 2003 KBI LTD. Rev. 4/03

For Use Under One Or More US Patent #s  
6,242,887 - 6,362,595 - 6,819,010 - 6,871,625 -  
6,888,266 6,988,475 - 6,988,476 - 7,134,415 - 7,198,016  
- 8,820,287B2 AND 20160053737A1



**KBI** STARTING PLANT SYSTEMS  
MANUFACTURER OF: KAPower™ POSITIVE  
ELECTROCHEMICAL DOUBLE LAYER CAPACITOR  
KAPower™ Energy Storage

KBI - 3401 INTERNATIONAL LTD.  
8500 PRINCETON RD. LAKE IN THE HEAVS IN GAITHERSBURG MD  
Tel: (410) 688-8888, (800) 321-8278, Fax: (410) 688-8889 www.kbidata.com 4/03